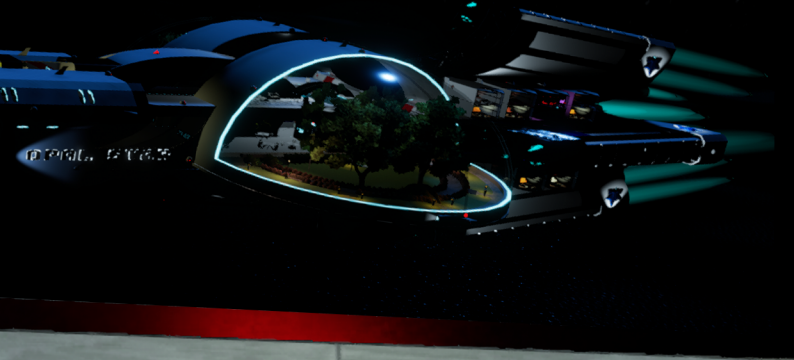


# CYBERSEX

EROTICA + TECHNOLOGY + DESIGN

JANUARY 2021



PLUS

Interview  
with JanetJ



*DJing at the Opal Star  
How it all began and their  
achievements so far*

Some words  
about **BDSM...**



**WARNING!  
ADULT CONTENT  
NOT FOR MINORS**

# Some words about BDSM...

By *NoirDesire* (with *KatjaNS* on photos)

When it comes to BDSM, there are many opinions and many prejudices that strike against you if you admit to this tendency.

BDSM is mostly misunderstood by the broad masses: «People are mistreated and abused». Such and other statements are often heard, BDSM is labelled as evil, violent and deviant sexuality. This is no different in «real life» than here in 3DXChat.

THIS IS WRONG The principle of the BDSM scene is: «safe, sane and consensual (SSC)». This means that only healthy and sane people live out their inclinations in mutual agreement without harming their partner. Anything else is abuse and is not what the BDSM lifestyle is about. Torture to obtain submission or holding someone against their will, has no place in the lifestyle and is also a violation of law. Modern day consensual D/s (Dominant/submissive) relationships are about a submissive agreeing to submit to their Mistress.

Previously the term for our passions was sadomasochism (SM, S / M or S & M) and the people following this passion were all seen as very bad, sick, perverted people. So some People gave names like Dominance and Submission (D & S, DS or D / s), Love Bondage and Bondage and Discipline (B & D) to make themselves and the pleasure police believe that what they were doing different from evil old sadomasochists. Finally, the term BDSM was born. This made many kinky people happy because it included Bondage and Discipline (BD), Dominance and Submission (DS) and Sadomasochism (SM).

The term BDSM is a collective term that covers a very diverse group of mostly sexual behaviour: BD: Bondage&Discipline = Stands for bondage and discipline. DS: Dominance&Submission = Stands for domination and submission SM: Sadomasochism = Stands for the pleasure of pain

BDSM can be practised for a limited period of time. In this case this time is often described as a session. Before and after this session both partners are equal, but there is also the permanent submission of one partner.

Even though it is of course difficult, as each one has his own personal preferences, I would like to try to describe the basic process of a BDSM session. At some points, of course, personal preferences come into play, as there is no standard schedule.

Especially if you don't know each other very well, it is common to agree in advance what is allowed to happen in the session. The sub always defines its limits which the dome is not allowed to violate.

Before a session, a code word is agreed to terminate the session immediately, so the submissive partner does not give up control completely, but can stop the session if the session goes against her ideas or threatens to exceed his/her limits. A word should be used that normally does not occur in a session. For example simply: «code word», this is unmistakable and does not normally occur in a session.

Of course, in contrast to RL, you can stop the game by pressing a button, so it is a matter of preference if you use such a word in a session here in the game.

Advanced partners also often differentiate





between HardOff and SoftOff whereby a SoftOff signals that the sub has now reached its limit, but does not want to break off the session but needs a break and the HardOff that the code is equivalent to the word before.

The session is typically started by a clear act in which the submissive partner symbolically gives up his equal rights. In this way it is easier for both to get into their roles. For example, you stand in front of the sub and start with a clear command like «Kneel down! Look at the floor!». At this moment the power gap becomes clear, there are clear instructions, «would you please, could you,» that would eliminate the power gap.



### **Tools and Toys**

Being asked what kind of tools and toys are used in session I would give a short overview about the most common ones - you may not find most of them in game, so this is done with imagination.

### **Blindfolds**

Blindfolds are an incredible way to maximize a sensual experience because when you restrict one sense, the others can become stronger. Blindfold use requires trust and strong communication skills between partners.

There are builders that are building tools with this function.

### **Collars and chokers**

Collars are part of the visual accoutrement of BDSM and are worn by a submissive.

Unlike collars, chokers aren't reserved for those in committed relationships.

Collars are available in Game.

### **Gags**

Gags are great for people who have oral fixations and those turned on by power exchange that happens when one partner consensually gives up their ability to verbally communicate.

### **Mouth spreaders**

Unlike ball gags, which fill the mouth, mouth spreaders open the mouth wide.

### **Clamps**

There are different types of clamps for different body parts. Basically, clamps pinch the skin to restrict movement or create a pleasurable painful pulling, squeezing, or tugging sensation. Typical use would be on nipples or on genitals.

There are builders that are building tools with clamps.

## Impact toys

Put simply, impact play involves using impact for the purpose of pleasure. Proper technique and risk awareness are imperative for impact play. Using these toys with improper form or on less fleshy parts of the body can cause serious damage.

Floggers are some of the most forgiving tools at lower velocities, since they spread their impact throughout their multiples tails.

Riding crops are fun and accessible to use. The small impact zone also means that they're more on the stingy side of pain.

Paddles have the largest impact zones of the bunch, so you'll get more of a thud than a sting. Of course, the material they come in has a lot to do with this, with leather paddles stinging more than wooden ones.

Canes/Rods are extremely stingy due to their small impact area. They cut through air like a hot knife through butter, so you'll have to use a lot of

restraint while swinging. It's also very important that you inspect these tools prior to any impact play since they're rather easy to break. And no one likes an ass full of splinters ;)

Whips are the most dangerous of the bunch and should definitely be left to the professionals. This is because it is extremely easy to break the skin and take an eye out if you don't know what you're doing. Translation: They're not for beginners.



You may find these tools as download, of course you can't use them in game besides in your imagination.



## Restraints

Cuffs, Handcuff - don't need to explain huh?

**Ropes** - Rope bondage can be slow and aesthetic. It can involve suspension. It can be paired with all kinds of other erotic play

## Binders

Most common in the BDSM scene are arm binders, like these Full Sleeve Binders, which c-o-m-p-l-e-t-e-l-y immobilize the wearer's arms.

## Bondage tape

Bondage tape like Unbound's Tether can be used to create makeshift hand or ankle cuffs, to secure someone's hands down, or any number of things.





You may find these tools as download, of course you can't use them in game besides in your imagination.

Spreader bars Ever hold your legs behind your head during missionary? Spreader bars, like this Adjustable Spreader Bar, do the leg work (heh) for you.

There are builders that are building tools with spreader bars..

### **Chastity toys**

As the name suggests, chastity toys are designed to consensually keep you (or your sub) from engaging in sexual activity.

### **Chastity belts**

Complete with lock and key, chastity belts are basically underwear that lock up your junk so that you can't go to the bathroom or touch your own bits unless the person with the key permits it.

Nothing says 'you are MINE' quite like locking up someone's genitals so they can't be accessed except by you

Many have built-in butt plugs, vaginal plugs, butt and vaginal plugs, cock rings, or vibrating or pulsating abilities.

Chastity cages While chastity belts go around the entire pelvic region, chastity cages are regulated just to the genitals. They're sometimes called "penis cages" or "cock cages" because this tool is only designed for penis owners. Cock cages serve as a constant reminder that your cock 'belongs' to your Dominant. It's the next level of ownership.

### **Anal hooks**

Visually, anal hooks look like a cross between classic carrot-shaped butt plugs and, well, Captain Hook's hand.

Typically made out of stainless steel, anal hooks feature a ball on one end that goes inside the anus, while the "hook" anchors it outside the body.



## Urethral toys

Your mouth, bum, and vagina aren't the only holes that may enjoy being filled.

## Magic Wand

There are many kinds of electro-stimulation toys, not just wands. Think cock rings, anal plugs, and even whip attachments that "strike" with electricity.

## Estim Kits

Erotic electrostimulation is a sexual practice that involves applying mild electrical currents to areas of the body for the purpose of sexual stimulation. These electrical currents are usually applied to a person's genital area - including the penis, scrotum, clitoris, and vagina - although other areas of the body may also be subject to erotic electrostimulation.

This form of sexual stimulation is common, but not limited to BDSM. Applying electrical stimulation to the sensitive areas of the body stimulates the nerve endings in the body. When applied to the genitals, this stimulation can increase the intensity of an orgasm or even induce an orgasm with no other sexual contact.

Erotic electrostimulation is also known as electrosex and electric sex play.

Electro-torture refers to the use of electricity to excite and "punish" a sexual partner during electro-torture sex. This is a practice within the BDSM community.

## BDSM Furniture

### BDSM & Spanking Benches

BDSM benches are bench-style pieces of furniture which are designed to restrain someone in a submissive position. Positions and styles of BDSM can vary, but most of them restrain the person in a hunched-over doggy style position, leaving them vulnerable to spanking, anal play, and pussy play, among other things.

## BDSM Chairs

BDSM chairs come in different shapes and sizes, but mostly they are chairs with holes in strategic places which restrain someone in a sitting position while leaving them vulnerable to the mercy of their master. BDSM chairs often have cutouts which expose the genitals or anus of the sitter, and the sitter can be dominative or submissive depending on the nature of the chair.

## BDSM Stockades and Crosses

BDSM stockades come in various forms, but they usually restrain your head and arms through some appropriately sized holes, leaving you bent over and unable to see behind you. Crosses, as the name suggests, are cross-shaped, forming an "X" as opposed to the vertical crosses used for punishment in biblical times. Crosses force a subject to be restrained with their limbs spread open; the subject can face forward or backward depending on their preference.

Cages





BDSM cages can be used in a cornucopia of different ways depending on the sexual needs of the dominant and submissive partners. For example, a sub may lock themselves in a cage while they wait for their partner to get home from work, feeling aroused by their restriction of freedom and the inevitable fucking that awaits them. Some subs like to use a cage because it makes them feel "on display" to their partner(s), turning them on in a more voyeuristic manner. Whatever your kink is, it goes without saying that cages should always be used with consent, safety, and clear boundaries.



### **BDSM Tables & Platforms**

A BDSM table basically refers to any kind of flat table-like surface which is designed to be

used for restraining someone. They can be used to keep your sub still while you tease them with whips, chains, feathers, ice cubes, candle wax, and anything else you can think of. Some have more specialized uses, such as milking tables, which look similar to a massage table but they have a hole for the man's penis to poke through underneath, allowing his dom to milk his cock without him seeing it.

### **Beds and bedding**

Sex dungeon beds and bedding are primarily designed for torturing and teasing your sub in a lying down position, similar to sleeping on a bed. BDSM beds cover all sorts of things, from old-fashioned cuff restraints to extreme latex vacuuming, so there's something for everyone to seek their kinky teeth into and enjoy.

### **Bondage Sex Slings**

When it comes to BDSM equipment, sex slings/swings are probably one of the most common things you come across (or cum across). These slings are designed to hoist your partner up in mid-air, restraining them into a vulnerable position, preferably with their ass/pussy at waist



height, begging for passersby to fuck them hard. Slings aren't just convenient for positioning (including anal) but they're great for motion too – the suspended ropes mean that you can toss your partner around and yank their body back and forth with very little effort. Physics is on your side here!

### **BDSM Fuck Machines**

I mean, BDSM fuck machines... need I say more? Whether you're playing solo or with a voyeuristic partner, fuck machines are the ultimate in anal or vaginal pleasure. Not only do you get to simulate real sex, but the machine never stops or gets tired – it just keeps pounding and pounding until you feel like you're about to burst into orgasm.



## Conclusion

There's a lot of information to take in about BDSM whether you're into light spankings or full-on leather gear, whips, and chains. There are only a few really important rules in BDSM:

- Consent is everything. Without consent, it's not BDSM or kinky; it's abuse. BDSM requires open and honest communication or it won't work.
- Be safe and understand the risks when you try new things
- There is no one right way to do BDSM. Everyone has different tastes and wants something different.

Sex is not a requirement in BDSM.

You can be a top, a bottom, or a switch. This can change with different partners.

Dominance and submission (D/s) is a relationship status within BDSM sexual or not.

You can reserve BDSM for the bedroom only or, as with D/s, make it a part of your daily life.

The kinks you like today may be different over time.

Everyone should have a safe word to use at least in the beginning.

All BDSM activities are on a spectrum from light to heavy, and all are legitimate acts of BDSM.

What consenting adults do with and to each other is between them alone, and doesn't affect your kinky play. Do what you enjoy, always remember the rules, and figure out who you are and what you like in the big, fun, and kinky world of BDSM.

BDSM should be looked at as a normal way of expressing sexuality. This text is not encouraging everyone to go out and buy floggers and whips, but it is encouraging to see sexuality as something that should be freeing. Vanilla sex is not the only form that should be accepted by society. It has also been concluded that BDSM does not have to harm a relationship, and only bring about pain and fear. It can be a beautiful self-discovery that leads to stronger relationships.

If you remember nothing else, always remember this: ***your kink isn't my kink, but your kink is OK.***

